

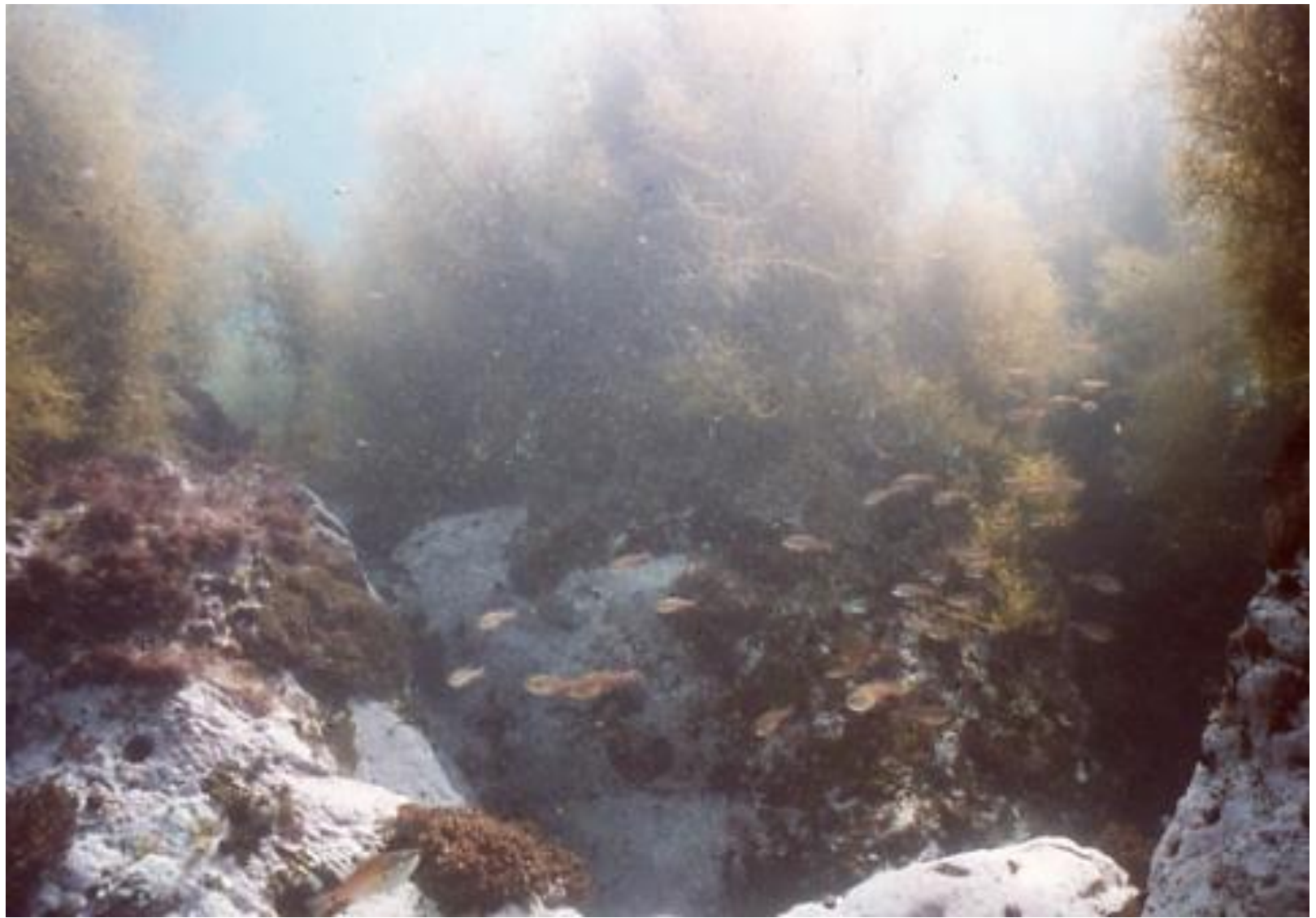
# **Recent reports on the construction of the artificial seaweed beds in Japan**



**MASAO OHNO**

**Usa Marine Biological Institute, Kochi University, Japan**











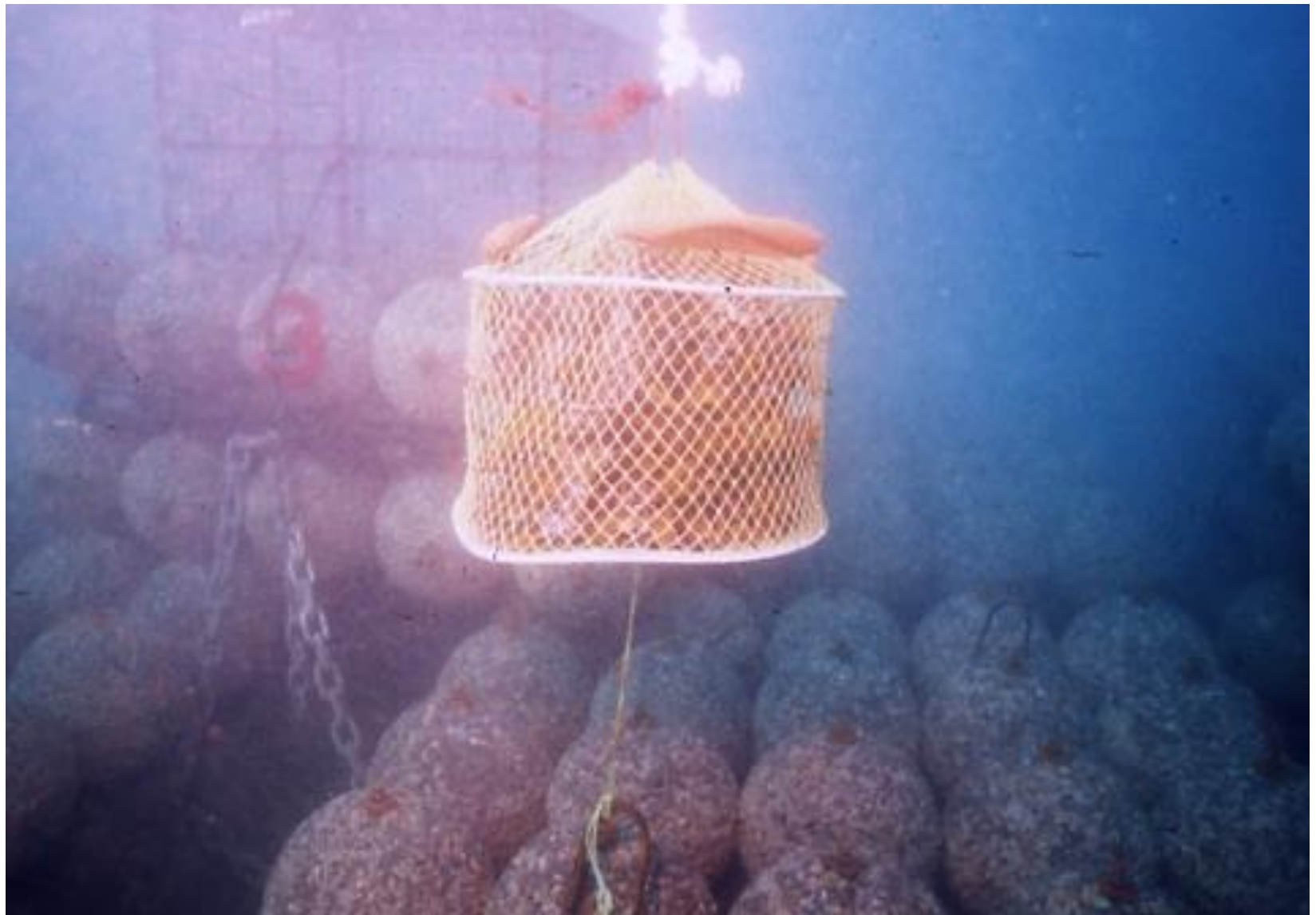
























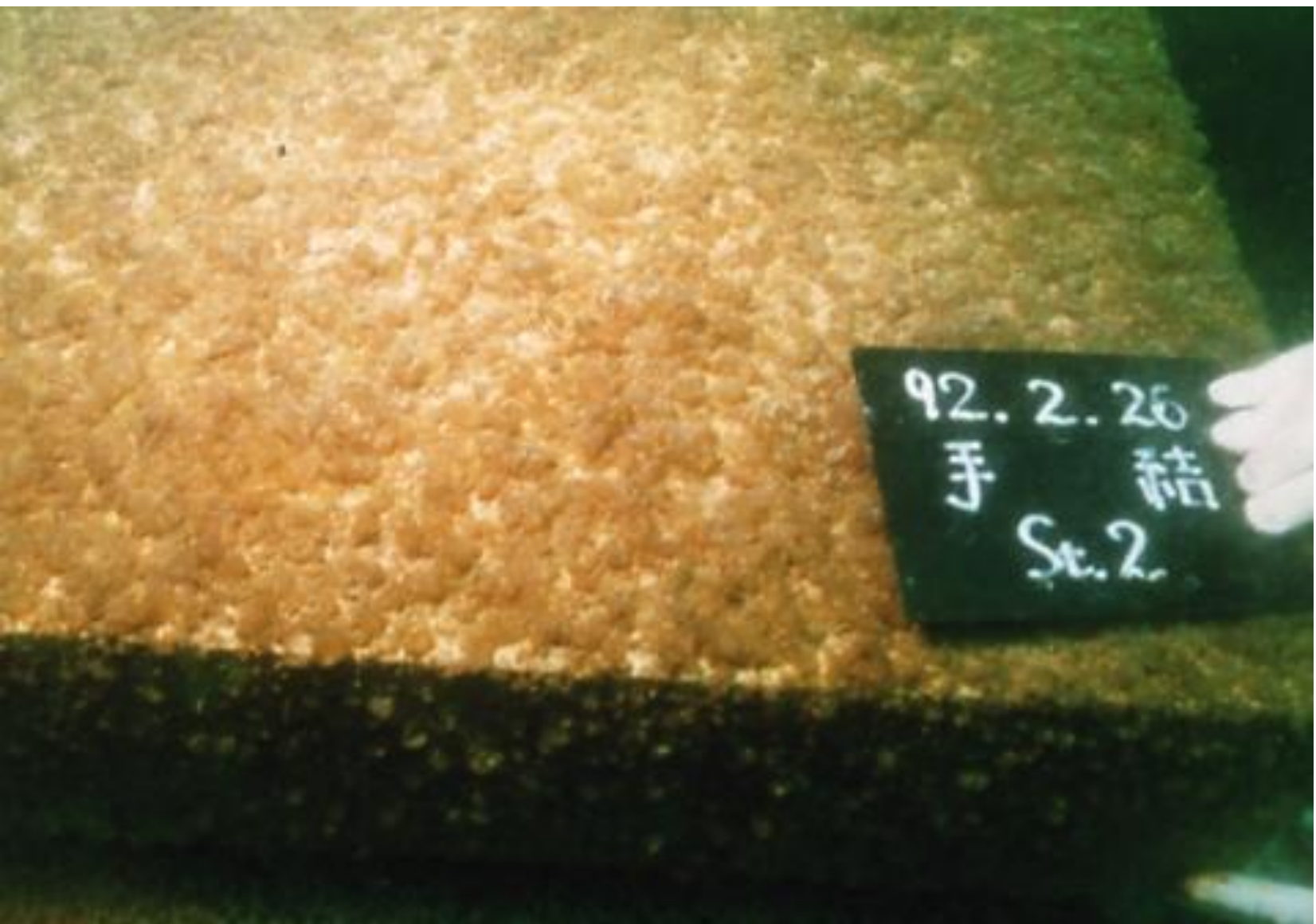












92.2.26  
手 結  
St.2

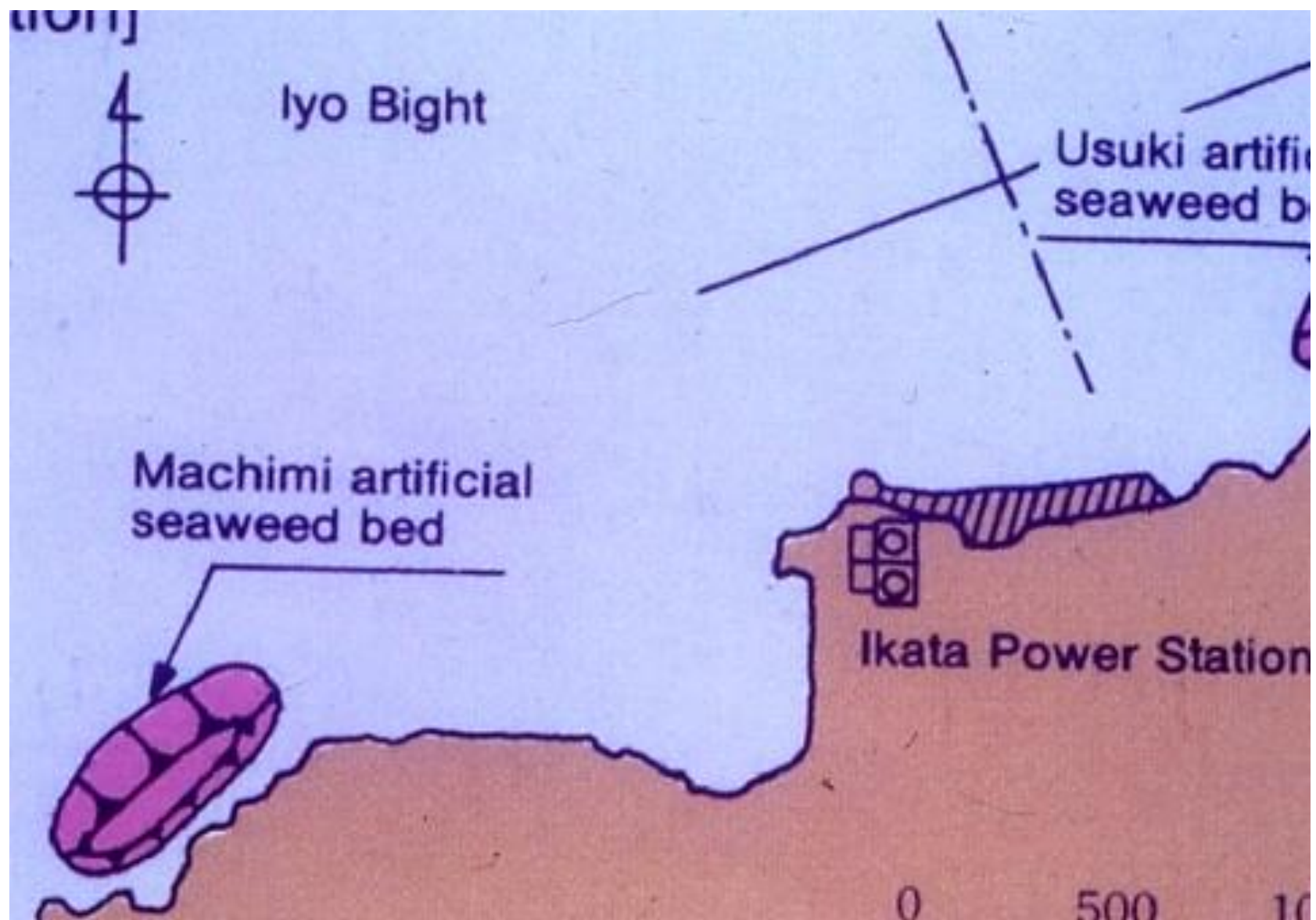




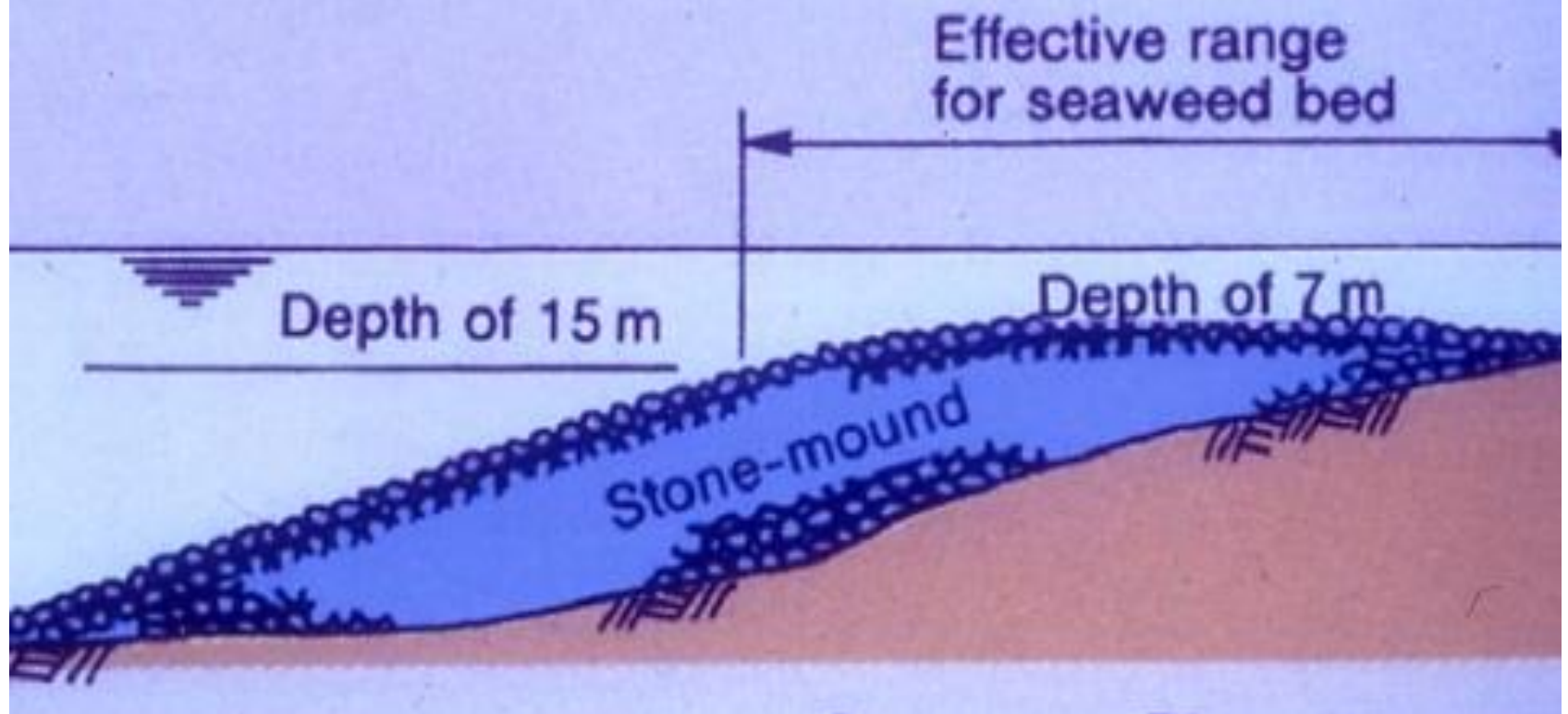






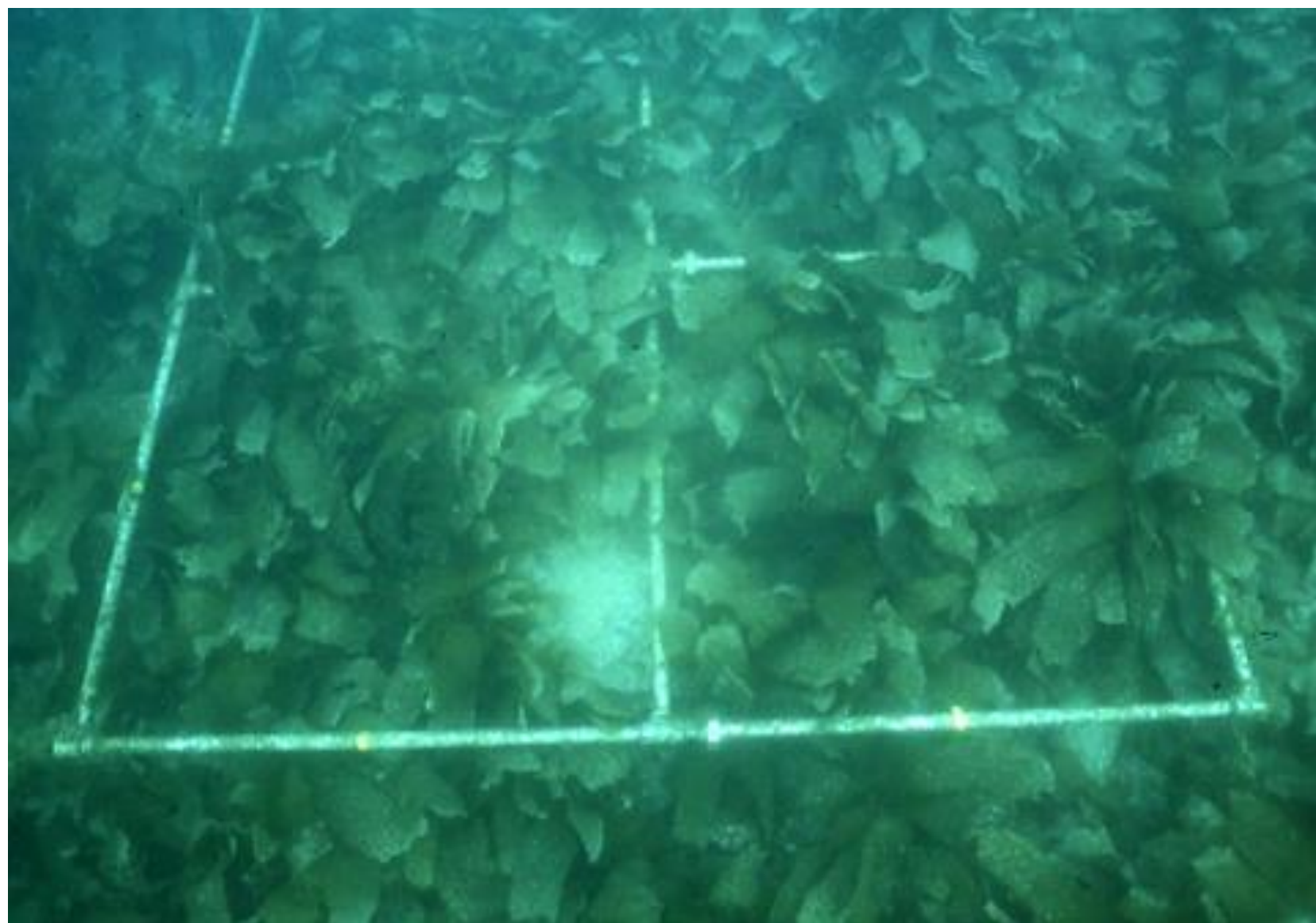


ss section]











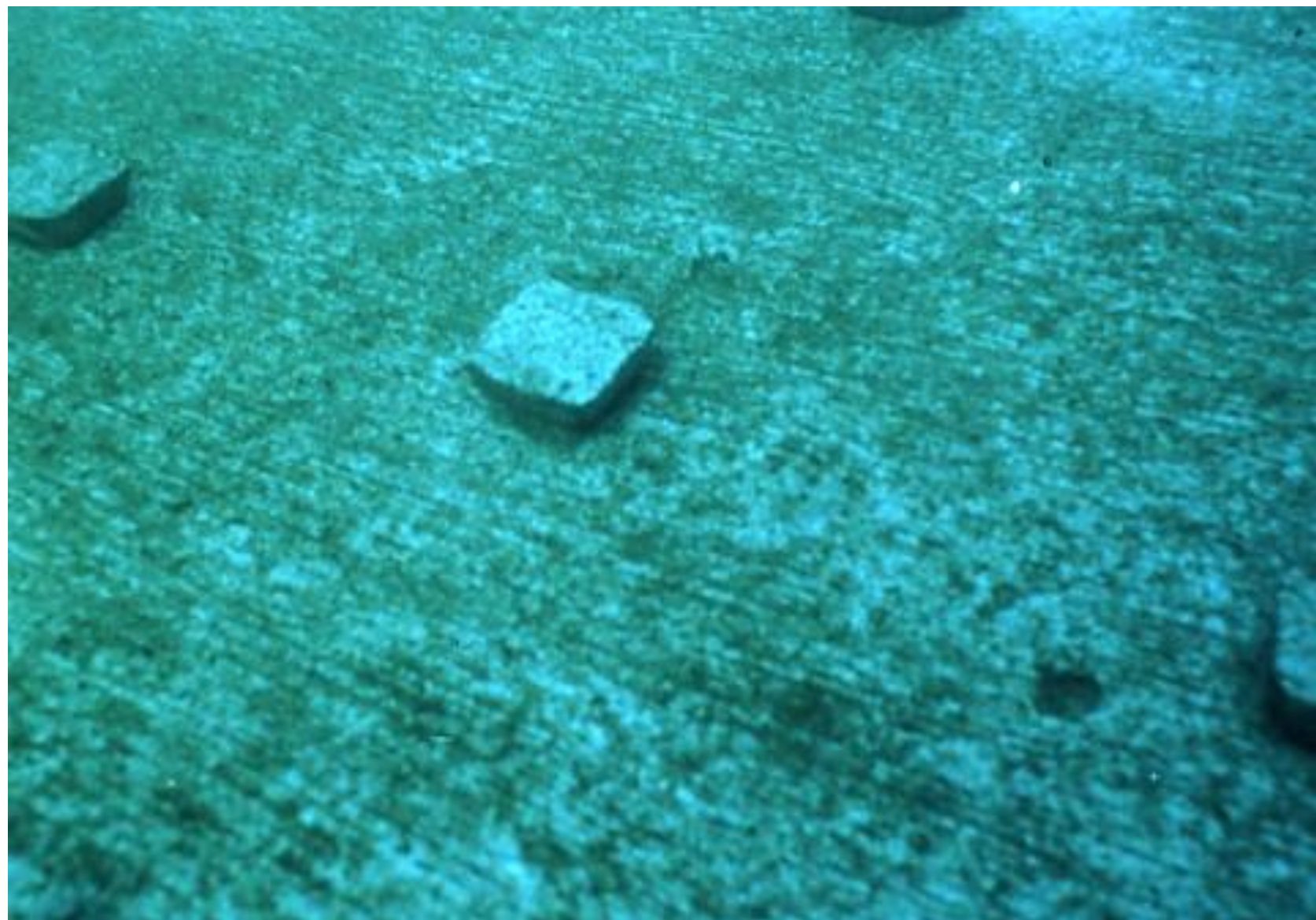








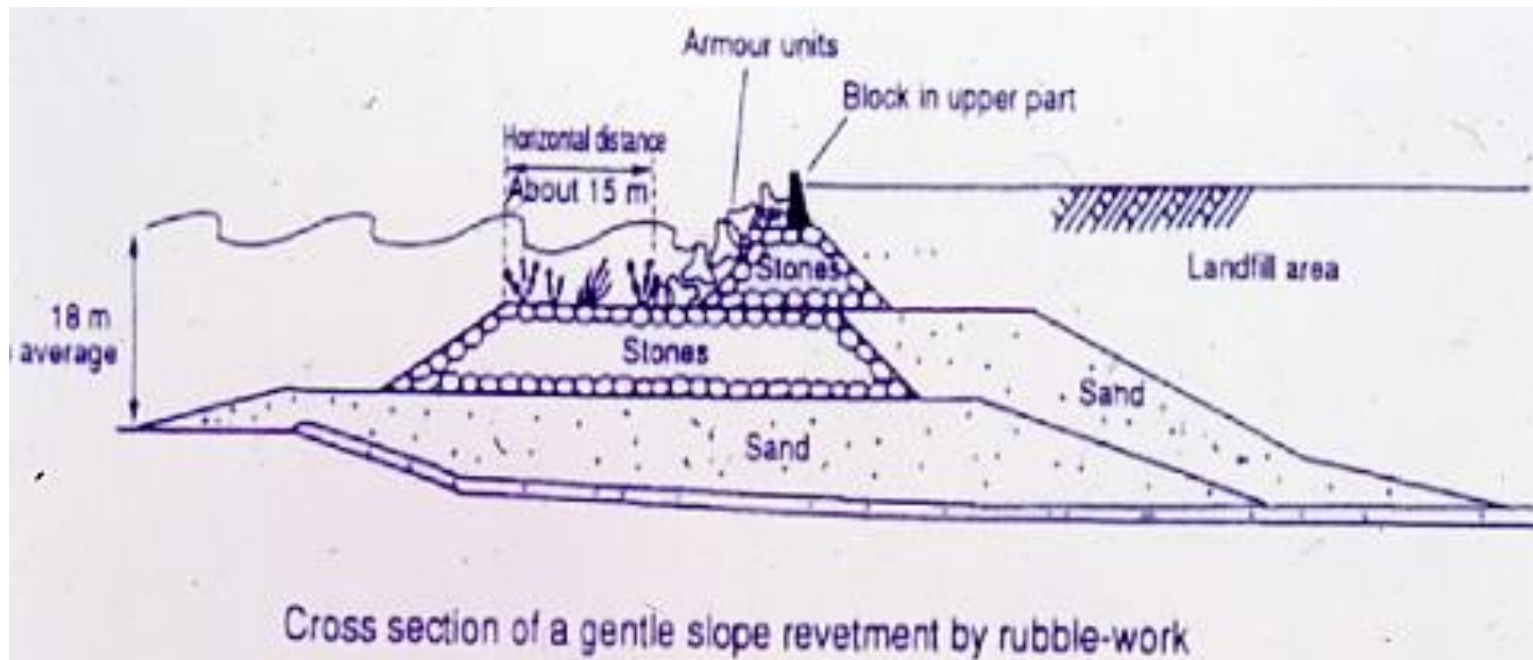












3.2 The revetment around Kansai International Airport and its area of sand terraces (Research Group for the Creation of Port and Harbor Environment, 1997)



Survey : 1993, April

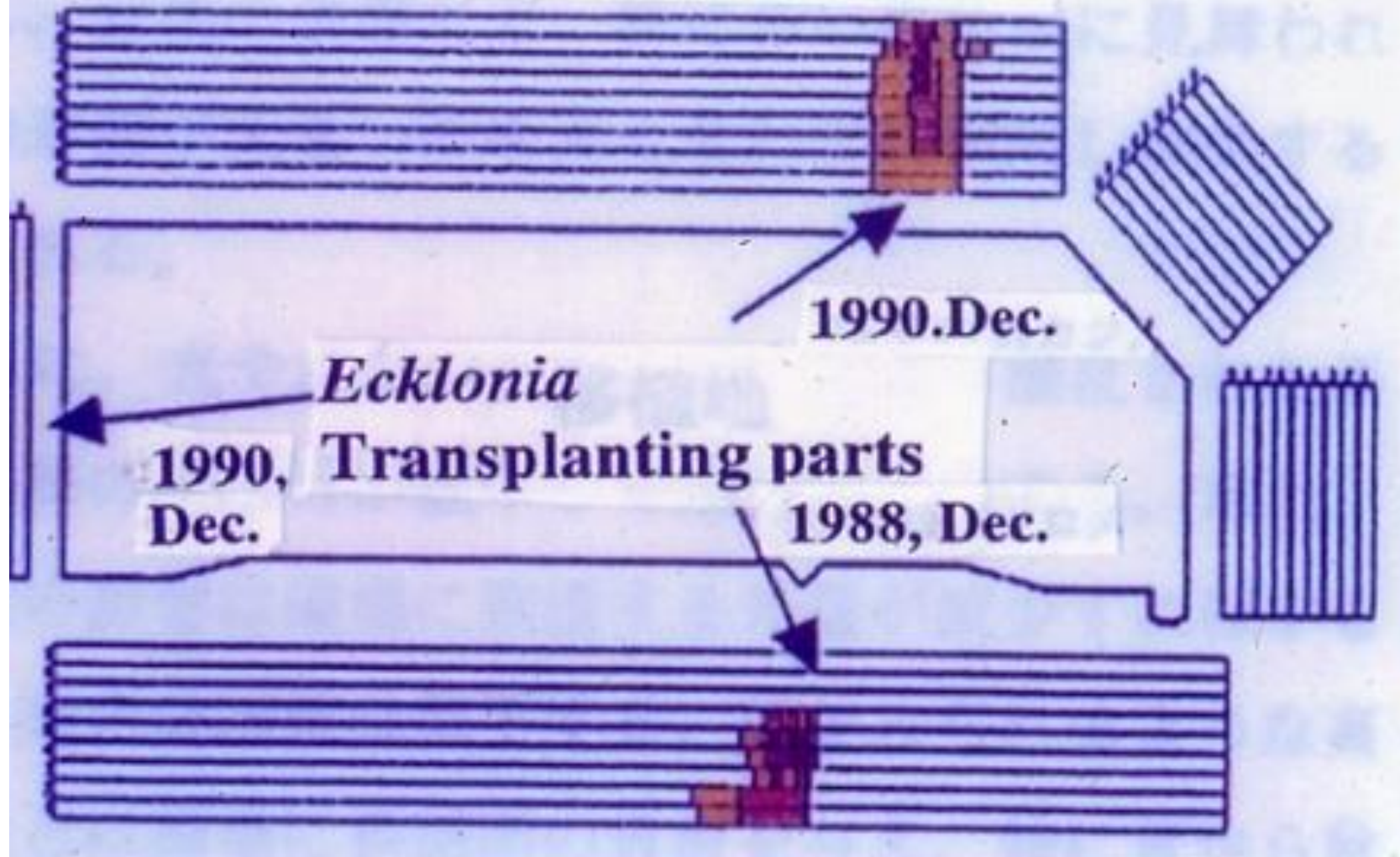




写真 3 東京湾の埋立地における、埋立地の改良工事（埋立地の改良工事）



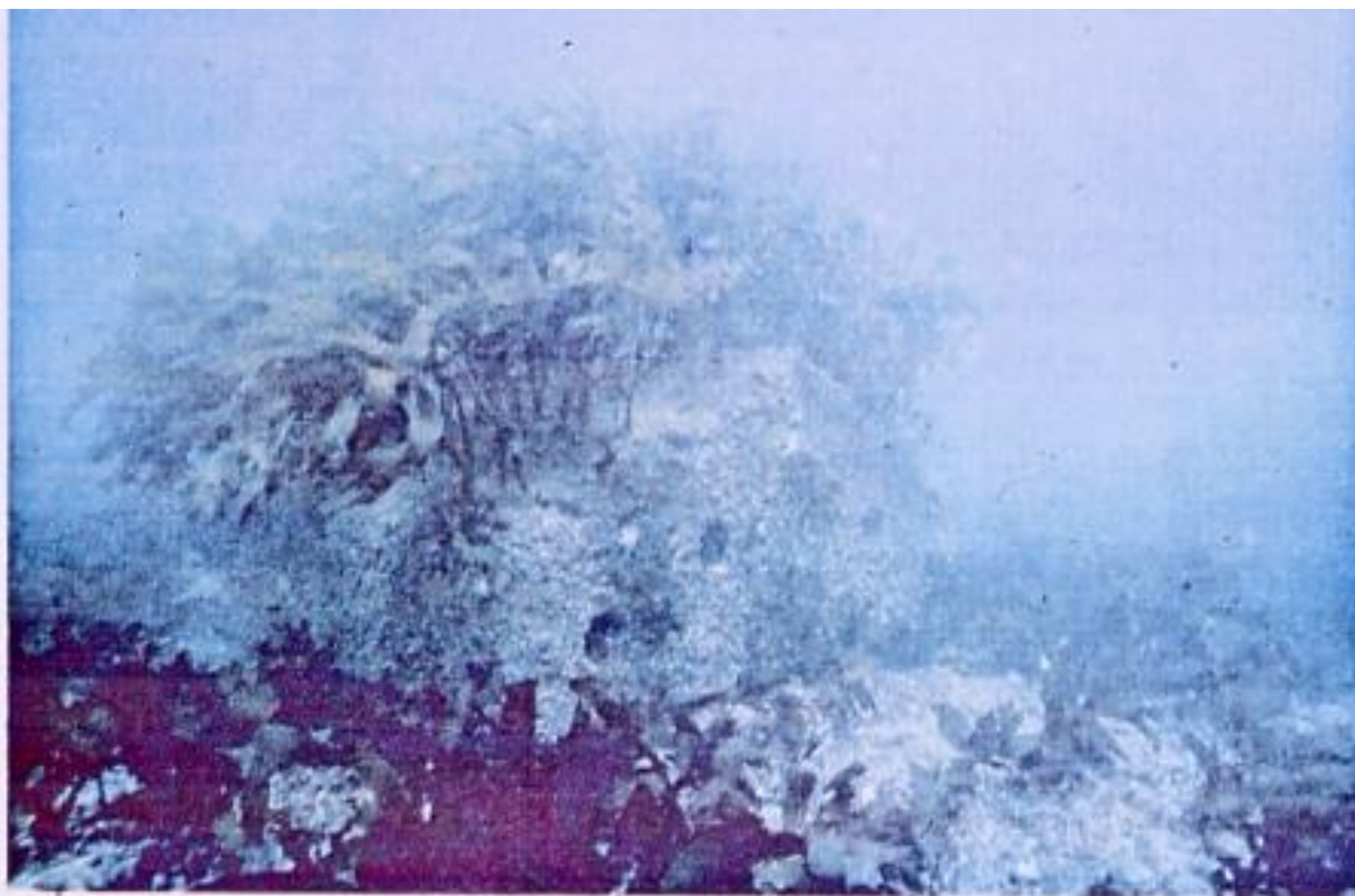
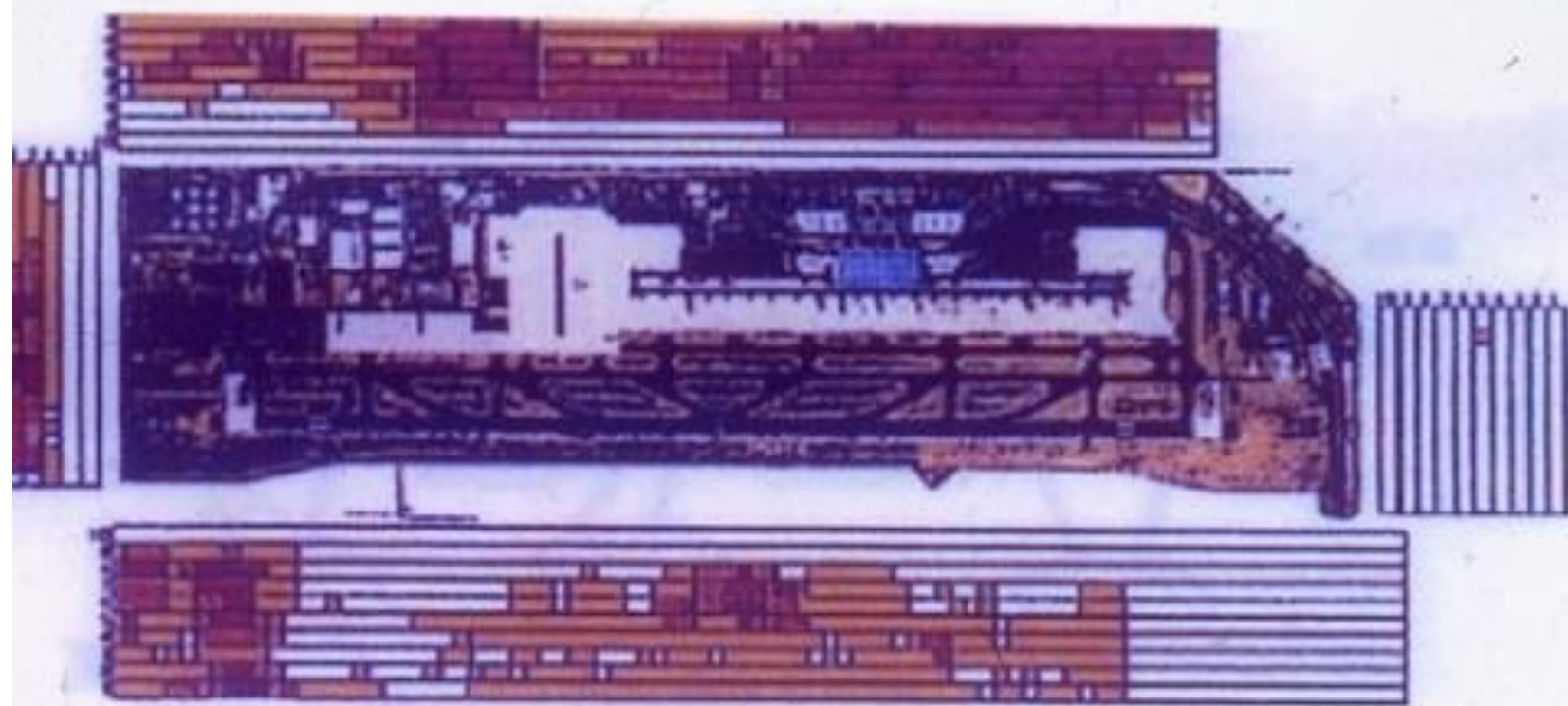


写真-4 水平小段部に設置されたカジメ種苗移植基盤と



Survey: 1977, April



### Coverage of *Ecklonia* plants

4	濃密	生(被度	81-100%)	
3	密	生(被度	51- 80%)	
2	疎	生(被度	21- 50%)	
1	点	生(被度	5- 20%)	







C











